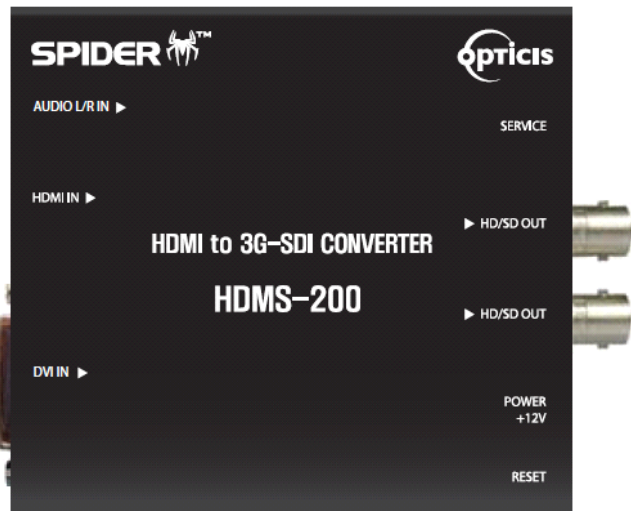


CONTENTS



SPIDER ™

HDMI and DVI to 3G-SDI Video Converter



User's Manual HDMS-200

| | |
|---------------------------------------|-----|
| Contents | 1-1 |
| Specification / Supporting resolution | 1-2 |
| Installation | 1-4 |
| Firmware update | 1-5 |
| Warranty Information | 1-8 |
| Troubleshooting | 1-9 |

Specification

| ITEM | DESCRIPTION |
|---------------------|------------------------------------|
| Input Signal | HDMI, DVI |
| Output Signal | SDI |
| VIDEO Input format | RGB(444), YCbCr (444), YCbCr (422) |
| VIDEO Output format | YCbCr (422) |
| Input format AUDIO | Standard Analog Audio L/R |
| Power | 5~24V DC |
| Power Consumption | 7W |
| Dimension (WDH) | 106.6 x 96 x 26.2 (mm) |

Supporting resolution

| SMPTE | Video Formats |
|------------|--|
| SMPTE-425M | 3G : 1920*1080p(60/59.94/50) |
| SMPTE-274M | HD : 1920*1080i (60/59.94/50) |
| SMPTE-274M | HD : 1920*1080p (30/29.97/25/24/23.98) |
| SMPTE-296M | HD : 1280*720p (60/59.94/50) |
| SMPTE-125M | SD : 601*525i (486_ NTSC) |
| SMPTE-125M | SD : 601*625i (576_PAL) |

Supporting resolution

| Input Format \ Output Format | 480i (NTSC) | 576i (PAL) | 480P | 576P | 720P24 | 720P25 | 720P30 | 720P50 | 720P59.94 | 720P60 | 1080i50 | 1080i59.94 | 1080i60 | 1080p24 | 1080p25 | 1080p30 | 1080pF24 | 1080p50 | 1080p59.94 | 1080p60 | 640x480p60 | 800x600p60 | 1024x768p60 | 1280x1024p60 | 1280x800p60 | 1280x960p60 | 1360x768p60 | 1440x900p60 | 1680x1050p60 | 1600x1200p60 | | |
|------------------------------|-------------|------------|------|------|--------|--------|--------|--------|-----------|--------|---------|------------|---------|---------|---------|---------|----------|---------|------------|---------|------------|------------|-------------|--------------|-------------|-------------|-------------|-------------|--------------|--------------|--|--|
| 480i (NTSC) | ● | | | | | | | | | | | | | | | | | | | | | | | | | | | | | | | |
| 576i (PAL) | | ● | | | | | | | | | | | | | | | | | | | | | | | | | | | | | | |
| 480P | | | | | | | | ● | | | | | | | | | | | | | | | | | | | | | | | | |
| 576P | | | | ● | | | | | | | | | | | | | | | | | | | | | | | | | | | | |
| 720P24 | | | | | ● | | | | | | | | | | | | | | | | | | | | | | | | | | | |
| 720P25 | | | | | ● | | | | | | | | | | | | | | | | | | | | | | | | | | | |
| 720P30 | | | | | ● | | | | | | | | | | | | | | | | | | | | | | | | | | | |
| 720P50 | | | | | | | ● | | | | | | | | | | | | | | | | | | | | | | | | | |
| 720P59.94 | | | | | | | | ● | | | | | | | | | | | | | | | | | | | | | | | | |
| 720P60 | | | | | | | | ● | | | | | | | | | | | | | | | | | | | | | | | | |
| 1080i50 | | | | | | | | | | | ● | | | | | | | | | | | | | | | | | | | | | |
| 1080i59.94 | | | | | | | | | | | | ● | | | | | | | | | | | | | | | | | | | | |
| 1080i60 | | | | | | | | | | | | | ● | | | | | | | | | | | | | | | | | | | |
| 1080p24 | | | | | | | | | | | | | | | | | ● | | | | | | | | | | | | | | | |
| 1080p25 | | | | | | | | | | | | | | | | | ● | | | | | | | | | | | | | | | |
| 1080p30 | | | | | | | | | | | | | | | | | ● | | | | | | | | | | | | | | | |
| 1080pF24 | | | | | | | | | | | | | | | | | | ● | | | | | | | | | | | | | | |
| 1080p50 | | | | | | | | | | | | | | | | | | | ● | | | | | | | | | | | | | |
| 1080p59.94 | | | | | | | | | | | | | | | | | | | | ● | | | | | | | | | | | | |
| 1080p60 | | | | | | | | | | | | | | | | | | | | | ● | | | | | | | | | | | |
| 640x480p60 | | | | | | | | | | | | | | | | | | | | | | | | | | | | | | | | |
| 800x600p60 | | | | | | | | | | | | | | | | | | | | | | | | | | | | | | | | |
| 1024x768p60 | | | | | | | | | | | | | | | | | | | | | | | | | | | | | | | | |
| 1280x1024p60 | | | | | | | | | | | | | | | | | | | | | | | | | | | | | | | | |
| 1280x800p60 | | | | | | | | | | | | | | | | | | | | | | | | | | | | | | | | |
| 1280x960p60 | | | | | | | | | | | | | | | | | | | | | | | | | | | | | | | | |
| 1360x768p60 | | | | | | | | | | | | | | | | | | | | | | | | | | | | | | | | |
| 1440x900p60 | | | | | | | | | | | | | | | | | | | | | | | | | | | | | | | | |
| 1680x1050p60 | | | | | | | | | | | | | | | | | | | | | | | | | | | | | | | | |
| 1600x1200p60 | | | | | | | | | | | | | | | | | | | | | | | | | | | | | | | | |

Installation

STEP1

Plug the AC/DC adapter to AC inlet and connect to receptacle on the product.

STEP2 (HDMI)

Connect HDMI source to HDMI input port of HDMS-200 with HDM cable. If necessary, connect the audio cable to audio jack.

STEP2 (DVI)

Connect PC or DVI source to DVI input port of HDMS-200 with DVI cable. If necessary, connect the audio cable to audio jack.

Note.1

Please see the D/P switch function as below.



STEP3

Connect SDI display to SDI output port of HDMS-200 with SDI coaxial cable.

Note.2

HDMS-200 has two (2) SDI outputs.

Note.3

HDMS-200 does not have scaling up/down feature. It just converts HDMI or DVI to SDI format with same resolution and refresh ratio.

Firmware update

STEP1

Please "Off" D/P switch No.2 to set the firmware mode. Then, plug in the adaptor.

STEP2

Connect Service port of New HDMS-200 and PC using a download cable.

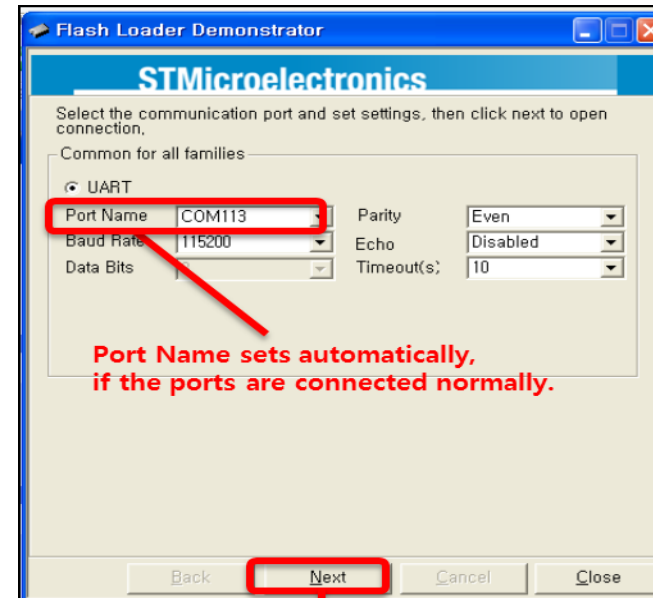
STEP3



Install the Flash Loader Demo file.

STEP4

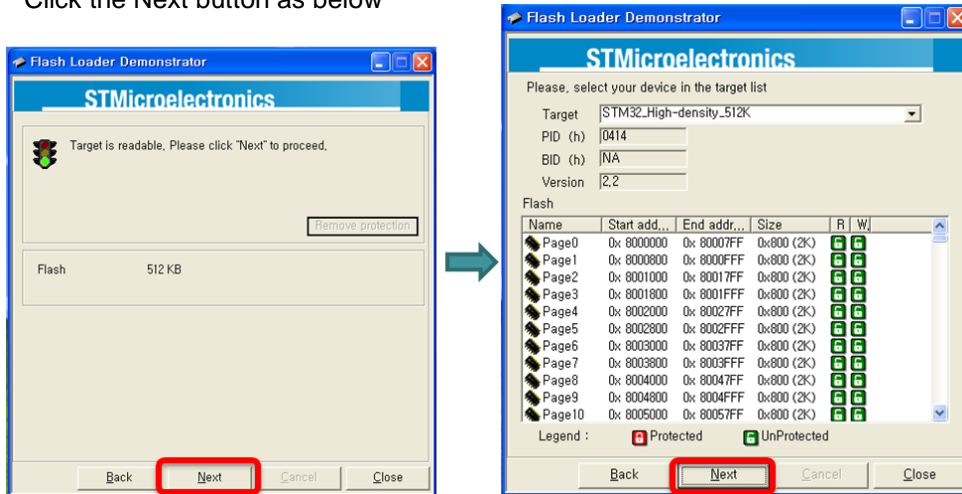
Check the PortName and Click the Next button as below.



Click the Next button

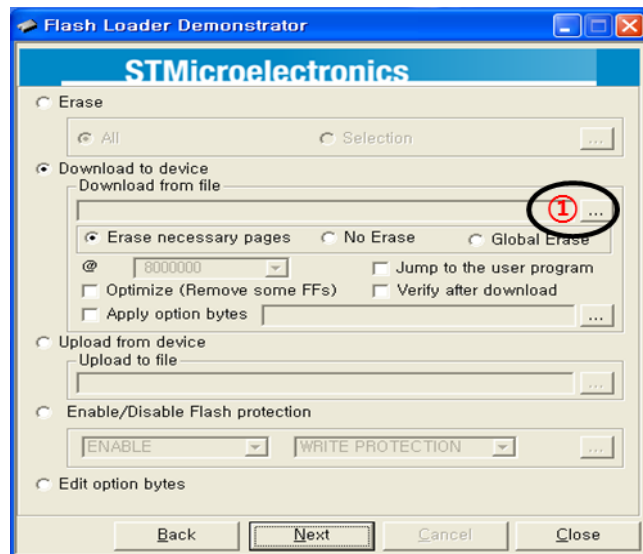
STEP5

Click the Next button as below



STEP6

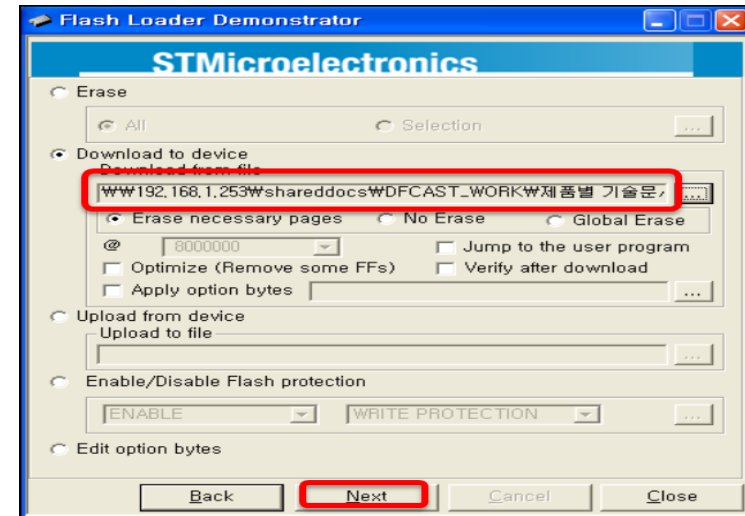
Click ①, Open of 'Download to device' to select directory and file (hex. format) to be uploaded.



1-6 Firmware update (continued)

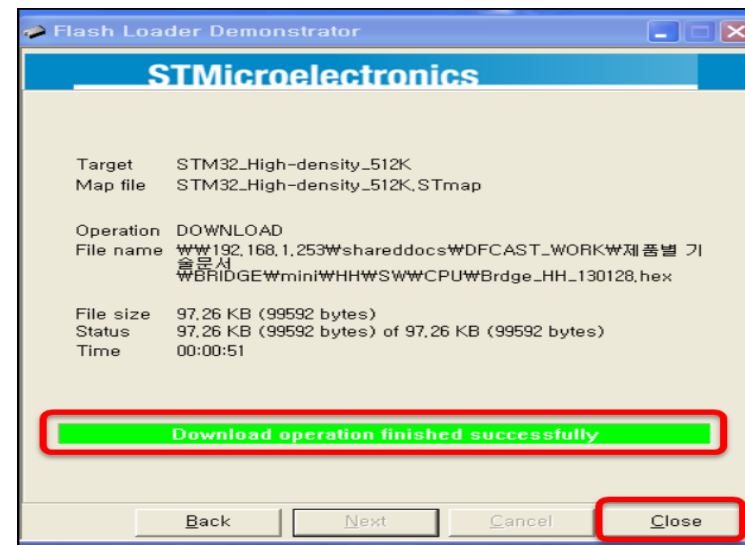
STEP7

Please check the file and Click the Next button as below



STEP8

Then, the firmware will be uploaded and click the Close button, if it's completed.



STEP6

Please close the program and "On" D/P switch No.2 again to run it under new firmware.

1-7 Firmware update

Warranty Information

1 (One) Year Warranty

OPTICIS warrants OPTICIS HDMS-200 HDMI to 3G-SDI converter to be free from defects in workmanship and materials, under normal use and service, for a period of one (1) year from the date of purchase from OPTICIS or its authorized resellers.

If a product does not work as warranted during the applicable warranty period, OPTICIS shall, at its option and expense, repair the defective product or part, deliver to customer an equivalent product or part to replace the defective item, or refund to customer the purchase price paid for the defective product.

All products that are replaced will become the property of OPTICIS.

Replacement products may be new or reconditioned.

Any replaced or repaired product or part has a ninety (90) day warranty or the remainder of the initial warranty period, whichever is longer.

OPTICIS shall not be responsible for any software, firmware, information, or memory data of customer contained in, stored on, or integrated with any products returned to OPTICIS for repair under warranty or not.

Warranty Limitation and Exclusion

OPTICIS shall have no further obligation under the foregoing limited warranty if the product has been damaged due to abuse, misuse, neglect, accident, unusual physical or electrical stress, unauthorized modifications, tampering, alterations, or service other than by OPTICIS or its authorized agents, causes other than from ordinary use or failure to properly use the Product in the application for which said Product is intended.

Troubleshooting

| Problem | Remedy Actions |
|--|---|
| Converter does not Operate | Make sure the 12V power supply is plugged firmly to DC receptacle and AC inlet. Check if the white LED light is on. |
| No picture (or signal) Or Poor picture | <ol style="list-style-type: none">1. If you are using copper based HDMI or DVI cable, overall length should not exceed 20ft. Longer than this will result in no or poor picture quality. To extend beyond 20ft, please use fiber optical HDMI or DVI extension cables.2. Make sure all HDMI, DVI, SDI connectors are tightly secured to all HDMI, DVI, SDI ports. Loose plugging on the connectors will result in no or poor picture.3. Reboot the converter. |
| Incorrectly sized picture / resolution or No picture | Reset HDMS-200 by pressing the reset button. |

Opticis Locations

OPTICIS HQ

Opticis Co., Ltd.

3F, 305, Sanseong-daero

Sujeong-gu, Seongnam-si

Gyeonggi-do, 13354

South Korea

Tel: +82 (31) 719-8033

Fax: +82 (31) 719-8032

www.opticis.com

For order support, please contact your Distributor or Reseller.

For technical support, check with the Opticis web site www.opticis.com or contact techsupp@opticis.com