

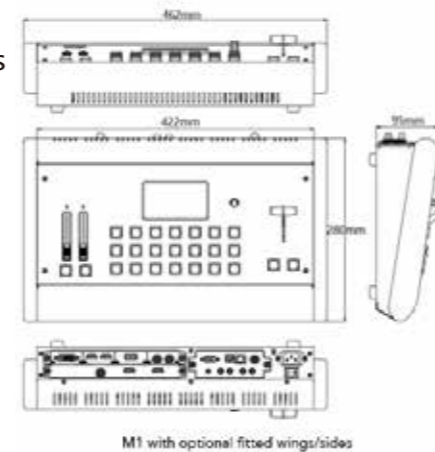
Specifications

Connectors	Input	11 slots up to 4 single inputs , select from Select from	DVI Module	1×DVI-I (compatible with DVI/VGA/YPbPr/CVBS)
			HDMI Module	1 x HDMI-A
Performance	Output Resolution	Select from below or customized	SDI	480i 576i 720p@50/60 1080i@59.94/60 1080p@23.98/24/25/29.97/30/59/59.94/60
			SMPTE	480i 576i 720p@50/59.94/60 1080i@50/59.94/60 1080p@50/59.94/60
			DVI HDMI	800x600@60 1024x768@60 1280x720@60 1280x800@60 1280x960@60 1280x1024@60 1400x1050@60 1600x1200@60 1920x1080@60
			VESA	800x600@60 1024x768@60 1280x768@60 1280x1024@60 1600x1200@60 1920x1080@60
Features	Output Resolution		SDI	SMPTE 425M (Level A & B) SMPTE 424M SMPTE 292M SMPTE 259M-C DVB-ASI
	Supported Standards		HDMI	1.3
Power	Processing Engine	10bit	DVI	Single Link
	Layers	2	USB	3.0
Environment	MASK Edit	Support		
	Brightness	Standard range		
Physical	EDID Management	Yes		
	Input Voltage	AC 85V-264V, 50/60Hz		
	Max Power	120W		
	Temperature	0-55°C		
	Humidity	10%-90%		
	Weight	Net weight	5.3Kg	
		Package	7.8kg	
	Dimensions	Net	462mm×280mm×95mm	
		Package	585mm×410mm×205mm	

Order Codes

Product Code	Item
220-0001-01-0	M1
290-0001-01-0	Output Module PGM HDMI/SDI PVW HDMI
290-0001-02-0	Output Module PGM HDMI PVW HDMI (Standard)
290-0001-03-0	Output Module PGM HDMI/SDI/USB 3.0 PVW HDMI
290-0001-05-0	Output Module PGM HDMI/USB 3.0 PVW HDMI
190-0001-04-2	Single DVI Input Module
190-0001-07-2	Single 3G-SDI Input/Loop Module
190-0001-10-2	Single USB2.0 Input/Backup Module
190-0001-13-2	Single HDMI Input Module
930-0002-01-0	Wings/Sidesfor M1 (Pair)

Dimensions



WEB: www.rgblink.com EMAIL: sales@rgblink.com PHONE: +86 592 5771197
Proudly designed and manufactured in Xiamen Hi Technology Zone, China

RGBlink



www.rgblink.com



On demand video mixing and scaling

RGBlink

M1



Fully integrated video scaling and mixing for everyday

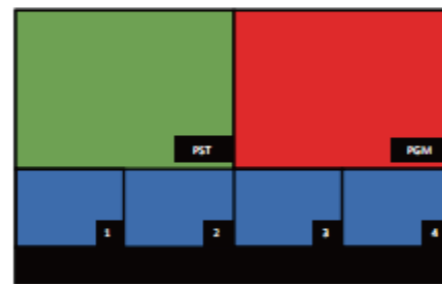
A complete solution, simply connect M1 to any display and start presenting. Front panel console style controls together touch screen display make M1 intuitive and natural in use, even for the new operator.

More than just a video mixer, M1 allows full scaled output to modern displays without to additional equipment. For stage/conference presentations on board features including PIP (picture-in-picture) add powerful capabilities to make use of additional video sources including cameras;

While compact in size, M1 brings together essential features for small presentation environments, including audio mix features allowing connection to audio mixers or powered speakers.

Features

- Four modular user fit inputs
- Single channel output on HDMI (optionally SDI)
- Resolution independent configurable output
- Dedicated Multi-View Preview
- Picture in Picture with DSK & Mask effects
- Digital video transition effects
- Pixel-to-pixel scaling engine
- Digital stereo audio processing
- Support for external audio insert and output
- Genlock Y In
- Remote control via XPOSE mobile app.



Dedicated Preview

A dedicated HDMI output with multi-view is provided from which both PGM and PST can be monitored, along with input sources and audio levels.

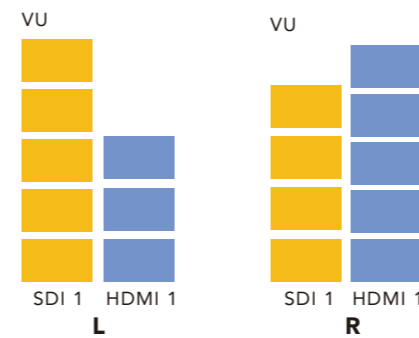


Picture-in-Picture

Add a PIP as a foreground layer in any position, including with scale and crop.

Transition Effects

There are over a dozen transition effects and wipes built into M1. These maybe used via the T-bar or timed from the TAKE button.



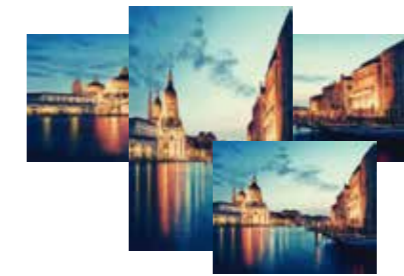
Mixed Audio

Both embedded and insert audio are supported with separate left/right audio level controls available on the front panel. Audio may be selected independently from the video source. PPM monitoring maybe shown on the PVW as visual confirmation of source and output.



Digital Effects

The PIP may have an effect applied – options include masks (with a range built in as well as support for custom masks), DSK/Chroma Key to remove a background colour and variable edge blend, as soften effect to allowing the PIP to merged with the main image.



Scale

Set output resolution independently from input resolutions, and scale the output pixel-to-pixel, ideal for direct connection to non-native displays such as LED.



Visual Enhancements

Apply a range of visual effects and enhancements with fine grain controls may be utilised for each input. Controls include brightness, contrast, saturation, sharpness and color temperature.



Video Mixing

M1 vision mixer style control panel provides a range of tactile controls including familiar T-Bar and large illuminated buttons for easy of operation.

Modular by Design

Each input is individual and are user fit – choose from a wide range of modular signal options. Modules are highly standardised across the RGBlink range for event greater flexibility.

Input options include HDMI, DVI, SDI, CVBS, USB and more.

Output options are HDMI or HDMI|SDI.



**shown with optional input and output modules – refer specification and options*