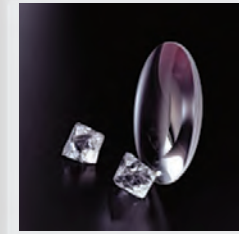




XD lenses



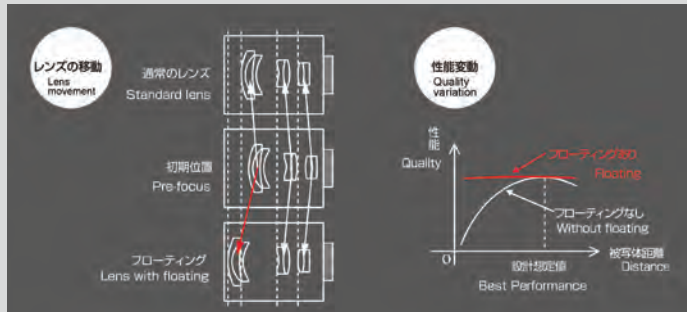
Kowa's XD Lenses (extra-low dispersion glass), when combined with a concave lens possessing special dispersion properties, reduces a very high percentage of chromatic aberration.

Circular Aperture



The construction of the aperture blades with 9 elements makes it possible that the diaphragm shows a circle at all f-stops, creating a more natural impression.

Floating Mechanism System



The floating mechanism system is effective in preventing malfunction and increasing the life of the lens. High optical performance was achieved in all photographic subject distances.

Standard Package

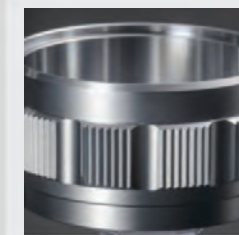
Master Lens, Lens Hood, Objective Cap, Mount Lens Cover, Soft Case.

Dual Link Iris



A dual Link Iris system makes it possible to choose silent or click aperture adjustment. Aperture settings can be changed in an instant to suit the photographic subject.

Aluminium Alloy Body



All internal parts are protected by a solid and rigid aluminium housing. The body feels reassuringly well made with good balance and weightiness in the hand and when attached to a camera body.

Made in JAPAN



From design to inspection, these Kowa lenses benefit from our concept "Made in Japan". At the forefront of technology, the lenses were designed and developed drawing on over 60 years of Kowa optical heritage.



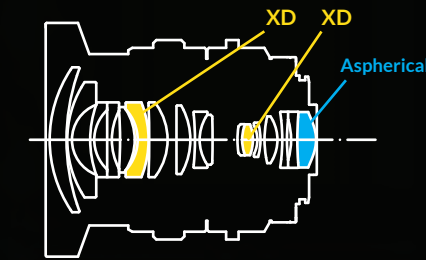
KOWA PROMINAR LENSES





SUPER WIDE LENS

Focal Length	8.5mm
F/T-number	F2.8/T3.0
Lens Construction	17 Elements in 14 Groups
Angle of View	93.5°(H)×77.1°(V)×106.0°(D)
Aris	9 (Circular Aperture)
Min Focusing Distance	0.2m
Max Reprojection Ratio	1 : 12.5
Filter Thread	Ø 86mm (attach to lens hood)
Weight	440g (excluding the lens hood)
Max Diameter x Length	Ø 71.5x86.8mm (excluding the lens hood)



KOWA PROMINAR 8.5mm F2.8 - BK/SV/GR



The super wide angle manual lens "KOWA PROMINAR 8.5mm F2.8" has a diameter of 106 degrees. This greatly reduces TV distortion to a value of just 0.12% producing high-definition pictures and movies. Chromatic aberration is limited at the highest level due to XD lenses.

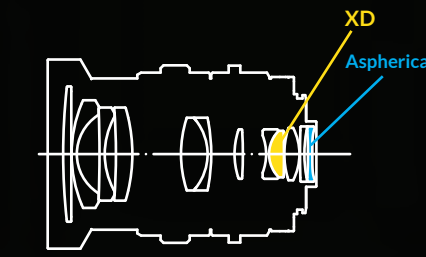


KOWA PROMINAR 8.5mm F2.8 | Photo: Robert Wilton



WIDE LENS

Focal Length	12mm
F/T-number	F1.8/T1.9
Lens Construction	12 Elements in 10 Groups
Angle of View	74.9°(H)×59.6°(V)×86.8°(D)
Aris	9 (Circular Aperture)
Min Focusing Distance	0.2m
Max Reprojection Ratio	1 : 10
Filter Thread	Ø 72mm (attach to lens hood)
Weight	475g (excluding the lens hood)
Max Diameter x Length	Ø 76.5x90.5mm (excluding the lens hood)



KOWA PROMINAR 12mm F1.8 - BK/SV/GR



The wide angle manual lens "KOWA PROMINAR 12mm F1.8" has a large field of view and bright F-stop. A greatly reduced TV distortion value of just 0.59% and a minimum focusing distance of 2m ensures high quality close-up pictures with a wide angle.



KOWA PROMINAR 12mm F1.8 | Photo: Robert Wilton

Drawing on our optical heritage.

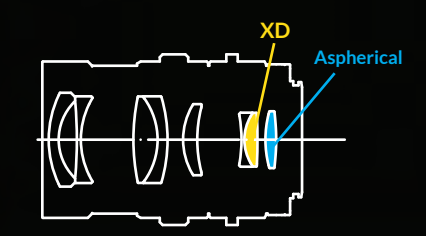
Kowa began from KALLOFLEX Auto-Mat in 1954 and continued to make the original and unique camera KOWA SUPER 66 for around 25 years.

This optical ideology and technology, inherited from over half a century is revitalized today with our new micro four third lenses - adorning the Kowa legendary PROMINAR name associated with only the finest optics.



STANDARD LENS

Focal Length	25mm
F/T-number	F1.8/T1.9
Lens Construction	8 Elements in 6 Groups
Angle of View	40.9°(H)×31.1°(V)×50.2°(D)
Aris	9 (Circular Aperture)
Min Focusing Distance	0.25m
Max Reprojection Ratio	1 : 6.5
Filter Thread	Ø 55mm (attach to lens hood)
Weight	400g (excluding the lens hood)
Max Diameter x Length	Ø 60x94mm (excluding the lens hood)



KOWA PROMINAR 25mm F1.8 - BK/SV/GR



The standard manual lens "KOWA PROMINAR 25mm F1.8" maintains a sharp image with high resolution and contrast from the centre to the corner image even in low light conditions.



KOWA PROMINAR 25mm F1.8 | Photo: Robert Wilton