

Quick Start Guide

D350 H.265 4K Multi-Channel Video Decoder

9 channels video decoding

(2022-11 Version)



Contents

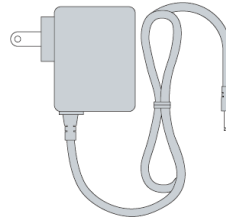
- Packing List
- Device interfaces and functions
- Device connection, login and use guide
- Device upgrade and restore to factory settings

Before using this product, it is recommended that you read the guide carefully. To ensure your personal safety and avoid physical or electrical damage to the device, please strictly follow the instructions of this guide to install and use it under the guidance of professionals. Incorrect electrical connections or physical installation may cause permanent damage to the device and even threaten personal safety.

1 Packing List



(1) D350 ×1



(2) Power Supply ×1

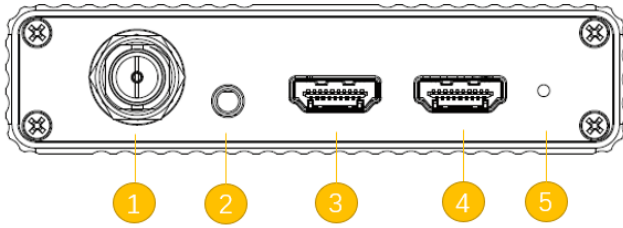


(3) Warranty Card ×1

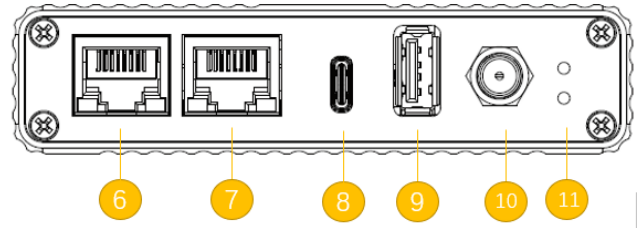


(4) Quick Start Guide ×1

2 Device Interfaces





- (1) SDI output
- (2) LINE OUT
- (3) HDMI output 1
- (4) HDMI output 2
- (5) Reset
- (6) 1000M Ethernet Port 1

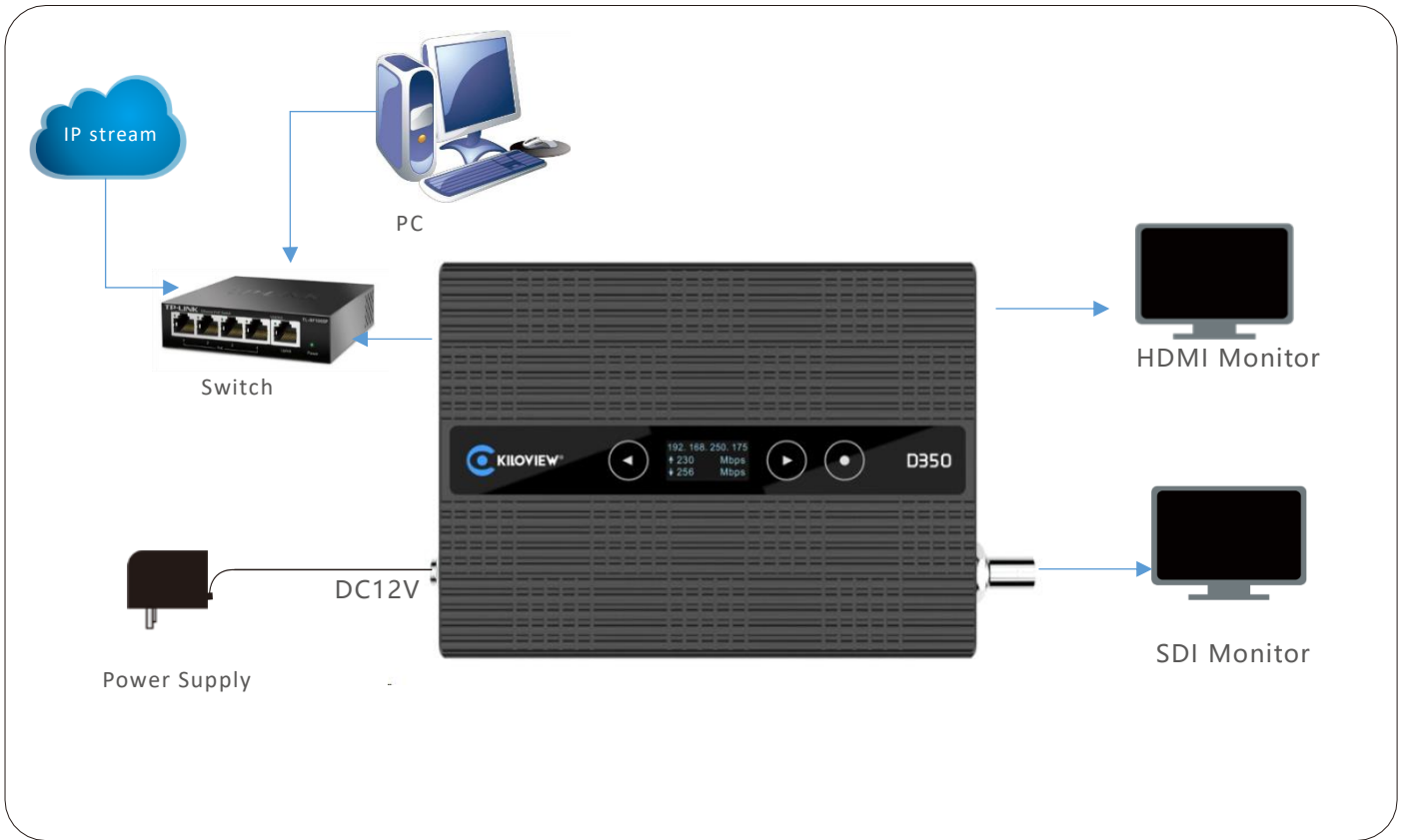


- (7) 1000M Ethernet Port 2
- (8) Type-C Expansion Port
- (9) USB Expansion Port
- (10) Power Port
- (11) Working Indicator

3 LED Indicators

	Name	Color	Status	Description
LED Indicators	 Power	Red	ON	Power connected
			OFF	Power off or failure
	 Run	Green	ON	Working
			OFF	Device is abnormal or not started

4 Application



Note

- Please use the equipped power adapter to power the device. Other unqualified power supplies may damage the device.
- D350 supports up to 9-channel decoding, HDMI and SDI output same or different contents.

5 OLED Screen and Touch Button

The D350 comes with an OLED screen and touch button. Users can easily check the output interface, resolution, device IP address, real-time upstream and downstream network rates, or switch the display by touching the button. For more detailed information, please refer to the user manual.

▶: Switch to the next page

◀: Switch to the previous page

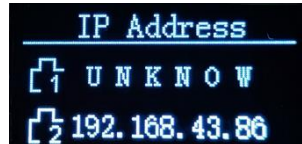
⊙: OK



6 Login to the device webpage

With the OLED screen, users can check the IP address in real-time.

After powered on, you can switch the touch button to check the IP address of your connected network. As shown below:



Login to the device webpage via the default IP address 192.168.1.168. That is, enter `http://192.168.1.168/` in the browser to access the web page.



Note

- To login with the default address, make sure that the computer is configured under the same network segment (192.168.1.*, * refers to numbers between 1-255 except 168)!
- After changing the device IP address, please restore your computer network to the working network IP address.
- If the D350 is connected to the network by Ethernet port 2, the default IP address is: 192.168.2.168!

The username and the password are **admin** by default.



Note

- To ensure information security, it is recommended to change your password immediately after logging in for the first time!
- Due to the browser compatibility issues, it is recommended to use Chrome or Edge.



For more information about the D350 configurations, please refer to:

<https://www.kiloview.com/en/support/docs/d350/>

7 Decoding and output

7.1 Add video source

In the lower left of the "Media", click "Add", and then select the "Source Type" and configure the parameters in the pop-up dialog box, and click "OK" to add the video source to the list.

The "Add Source" dialog box is shown with the following configuration:

- Name: Name
- Source Type: RTMP (selected), RTMP Server (sub-selected)
- URL: rtsp://
- Transmission Mode: TCP
- Username: (empty)
- Password: (empty)
- Play Cache: Normal latency buffer (~200ms)
- Response Speed: Normal
- Audio de-sync compensation: 0 (ms)



Note

- The IP address of video source can be tested with a player such as VLC.
- If video source is from network, it is required to configured with a high buffer time for playback buffer until the video decoding output is smooth.



For more information about how to add the video source, please refer to:

<https://www.kiloview.com/en/support/docs/d350/>

7.2 Preview

The added sources will be displayed in the “Video Source”, drag the source to the upper “Source Preview” window to preview the source images and to configure the output parameters.

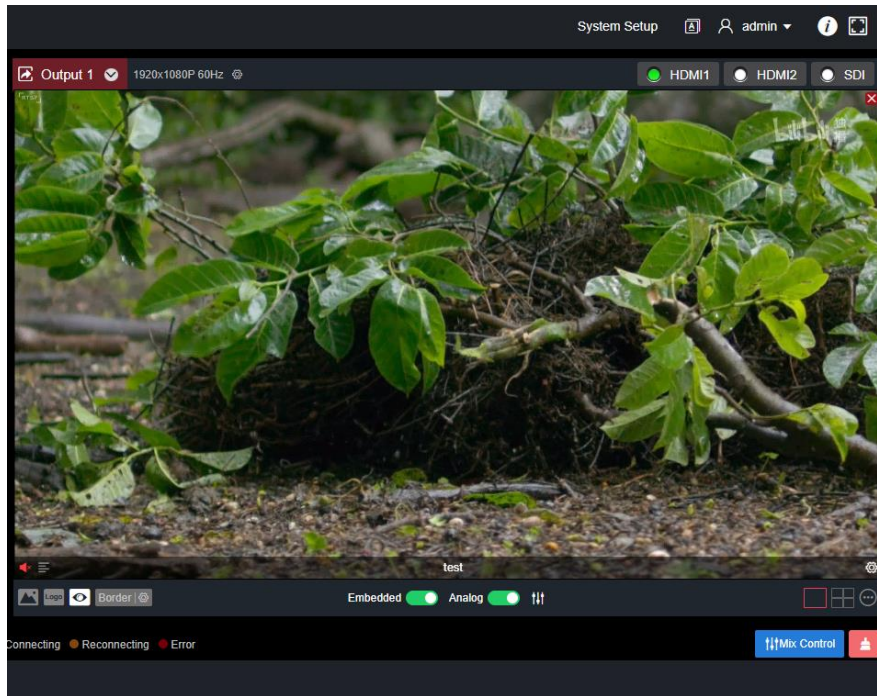


Note

- It is recommended to use the latest version of Chrome and Edge for preview function.
- Preview in browser does not support video sources with **B-frame** and **H.265**.
- To preview, please use the service network IP address to login to the device.
- The “Source Preview” window is under "Image" mode by default, and the image refreshes every 3 seconds; if the CPU performance of your computer is well, you can click and switch to "Video" mode, and there will be smooth video.

7.3 Output

There are two output windows on the webpage. You can select SDI or HDMI to decode and output the same or different content in the upper right corner of the window. Drag the video source into the output window, that is, output with the selected SDI or HDMI interface.



Note

- The output resolution should be the resolution and frame rate that the receiving monitor can support.
- The audio is turned off by default, and it can be turned on by clicking the red speaker in the lower left corner of the output window.
- Multi-screen output needs to be configured by adding a layout, and supports up to 9 grids output.



For more info about D350 output layout configurations, please refer to:

<https://www.kiloview.com/en/support/docs/d350/>

8 Firmware Upgrading

8.1 Download upgrade firmware



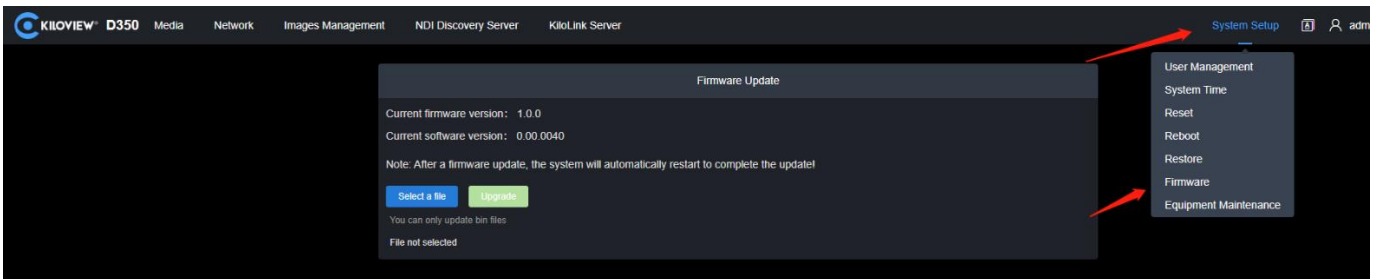
Kiloview will provide the firmware of updating functions for D350, please refer to:

<https://www.kiloview.com/en/support/download/>

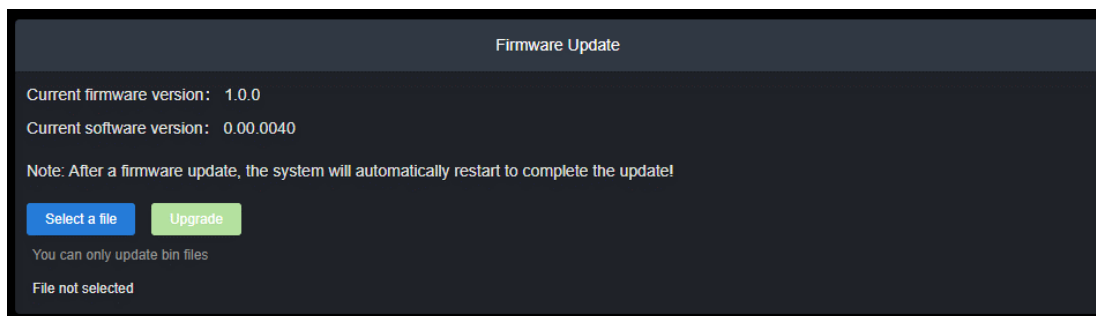
Select "video decoders" > "D350", find and download the latest firmware

8.2 Upgrade firmware

Login to the web page of D350, click "Settings">"Firmware Upgrade" to check if there is any latest firmware available to download. If yes, select the downloaded firmware and click "Firmware Upgrade".



After a successful upload, it needs to reboot the device. After clicking "ok", the device will restart, please be patient.



**Note**

- Please not power off during the upgrade process, otherwise the device couldn't work.
- Generally, this process can take 3-5 minutes to upgrade the device. If it's still not completed after 5 minutes, please try refreshing webpage. If you still can't access it, please try to contact technical support.

9 Restore factory settings

If the device cannot work normally after modified the parameters or forgot IP configuration, please restore factory settings.

Two Easy Methods:

- 1) If you can login to webpage, click "Settings>System settings>Restore factory settings" on the webpage.
- 2) If you cannot login to webpage, press the RESET button for 5 seconds in the bottom of device.

**Note: After restoring factory setting, below parameters will be turned to default value:**

- Login password will be restored to "admin".
 - Your device will be restored to obtain a DHCP-assigned IP address by default and the failover address 192.168.1.168 will be bound to the device.
 - All decoding parameters of video and audio will be restored to default value.
-

10 Others

To prolong the device life, please unplug the power and keep it properly if you do not use it for a long time.



For more questions, please contact us via:

<https://www.kiloview.com/en/support>



Please scan with browser.

KILOVIEW Electronics CO., LTD.

Tel: 86-18573192787 Email: support@kiloview.com Web: www.kiloview.com/en

Address: B4-106/109, Jiahua Intelligence Valley Industrial Park, 877 Huijin Road, Yuhua District, Changsha City, Hunan Province, China.