

Extron

CREATING SAFER MEETING EXPERIENCES

APPLICATION GUIDE FOR EXTRON AV SYSTEMS



Getting Back to Work Safely and Effectively

As employees return to the office, organizations will need to adapt to an evolved situation: potential smaller meeting room capacities, new policies with regards to cleaning equipment, rules on social distancing and an increased need for videoconferencing. They all impact the way you work in the office. This document shares some best practices for how Extron AV solutions can help you handle these situations.



In this guide, we will cover several practical application examples on the following topics:

- Meeting Room Sanitization
- Creating Signage for Health and Safety Guidelines
- Minimizing Physical Interaction with Shared Equipment

Minimizing Physical Interaction with Shared Equipment

There are several ways that Extron solutions can reduce users having to physically interact with AV systems. Some of them will be covered in the application examples:

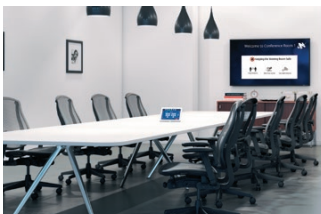
- Room Automation
- Wireless Presentation
- Control on BYOD devices with QR codes





AUTOMATED HUDDLE ROOM – PAGE 4

A simple huddle room with automated controls. The occupancy sensor will automatically trigger the system to switch on the display in the huddle room, so no buttons need to be touched.



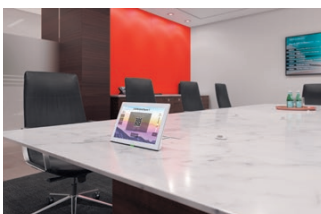
CUSTOM SIGNAGE WITH HEALTH AND SAFETY INSTRUCTIONS – PAGE 6

A simple meeting room with a customized screen saver that shows the safety instructions on the meeting room display.



WIRELESS PRESENTATION WITH ROOM AUTOMATION – PAGE 8

Wireless presentation from personal devices, such as phones, tablets, and laptops, combined with a customized Welcome screen that displays the safety and health instructions for the room.



ROOM CONTROL FROM PERSONAL DEVICES USING QR CODES – PAGE 10

Control the room from a personal device by scanning a QR code on a central touchpanel, enabling people to use their own devices and minimize physical contact with shared surfaces.



AUTOMATIC CAMERA CONTROL WITH CEILING TILE MICROPHONE – PAGE 12

Enable automatic camera control by using a ceiling microphone tile array with beamforming to locate the speaker and control the camera based on speaker position.



FINDING AVAILABLE MEETING SPACES – PAGE 14

Easily locate and view the status of all meeting rooms at a glance from a central area and communicate safety and health instructions for staff and visitors.

AUTOMATED HUDDLE ROOM

Requirements

A simple huddle room with automated controls including an occupancy sensor to automatically switch on the display in the room, so no buttons need to be touched. Connectivity for the HDMI laptop and cable management is offered with the Cable Cubby 100.

Extron Equipment List

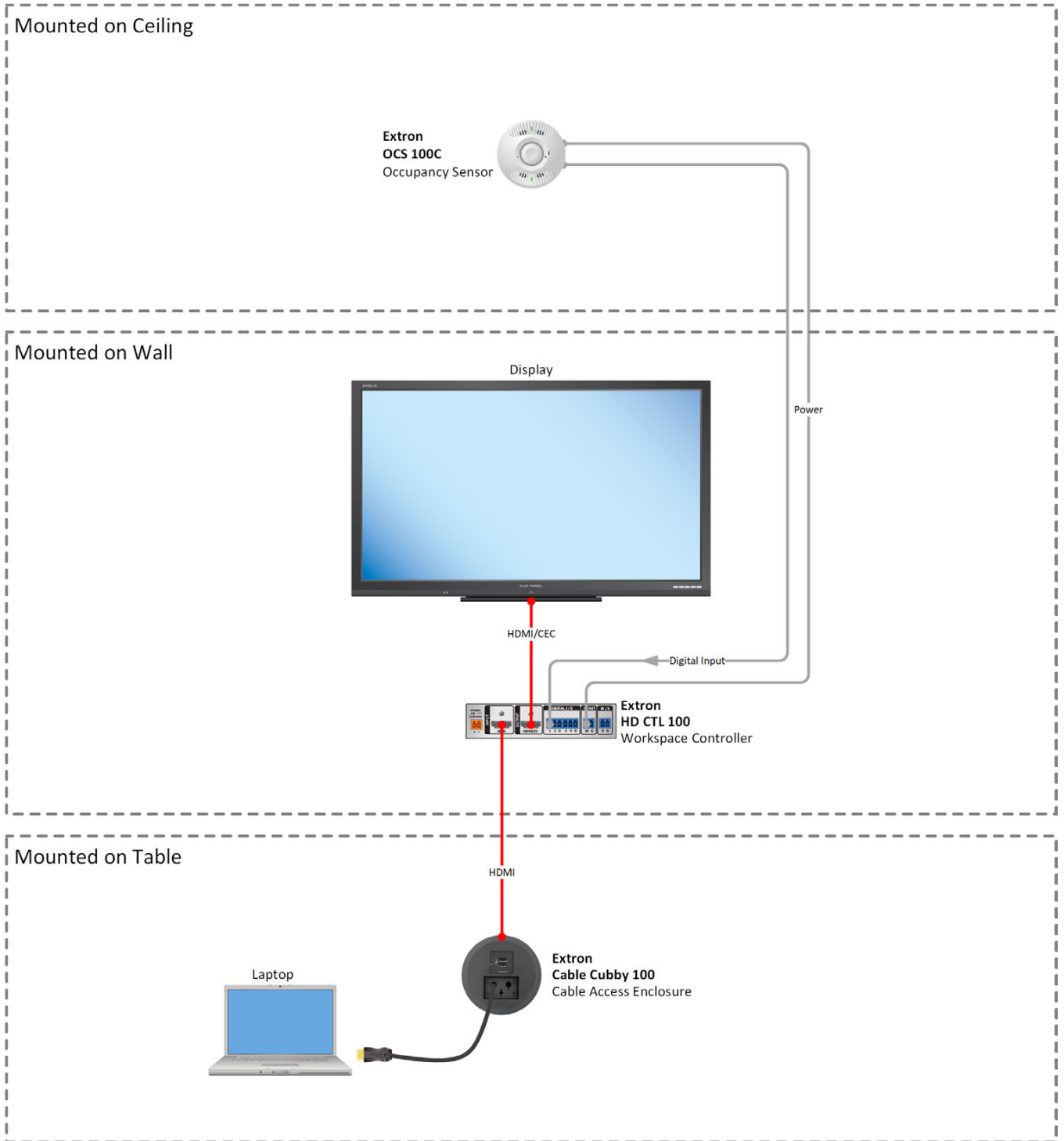
- **HD CTL 100** – Workspace Controller
- **Cable Cubby 100** – Cable Access Enclosure for AV Connectivity and Power
- **OCS 100C** – Occupancy Sensor

Capabilities

- Connectivity for HDMI laptop
- Automatic control of display power via presence detection



System Design



CUSTOM SIGNAGE WITH HEALTH AND SAFETY INSTRUCTIONS

Requirements

Simple meeting room with a customized screen saver showing the safety instructions on the meeting room display. The user can connect a laptop and then the system will automatically switch on the display and select the laptop as the active source. Connectivity is offered for HDMI, DisplayPort and USB-c laptops.

Extron Equipment List

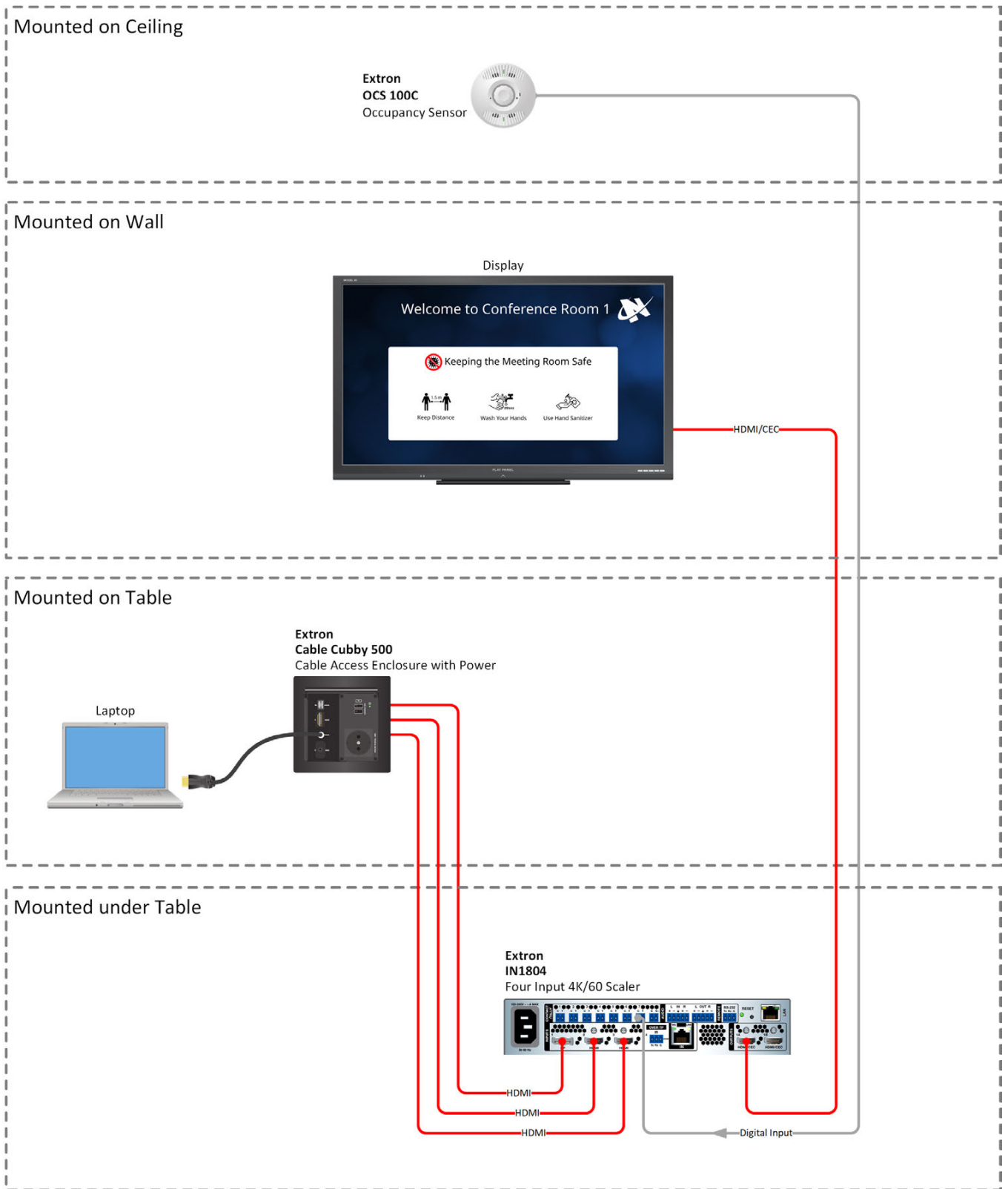
- **IN1804** – Four Input 4K/60 Seamless Scaling Switcher
- **Cable Cubby 500** – Cable Access Enclosure for AV Connectivity and Power
- **OCS 100C** – Occupancy Sensor



Capabilities

- Creating customized welcome screen with safety and health instructions
- Automatic control of display power via presence detection
- Automatic switching of sources based on signal presence
- Supports HDMI, DisplayPort and USB-C laptops
- Connectivity and cable management with Cable Cubby

System Design



WIRELESS PRESENTATION WITH ROOM AUTOMATION

Requirements

Wireless presentation from personal devices such as smartphones, tablets and laptops combined with a customized welcome screen displaying the safety and health instructions for the meeting room.

Present from up to four devices simultaneously without using any cables.

Extron Equipment List

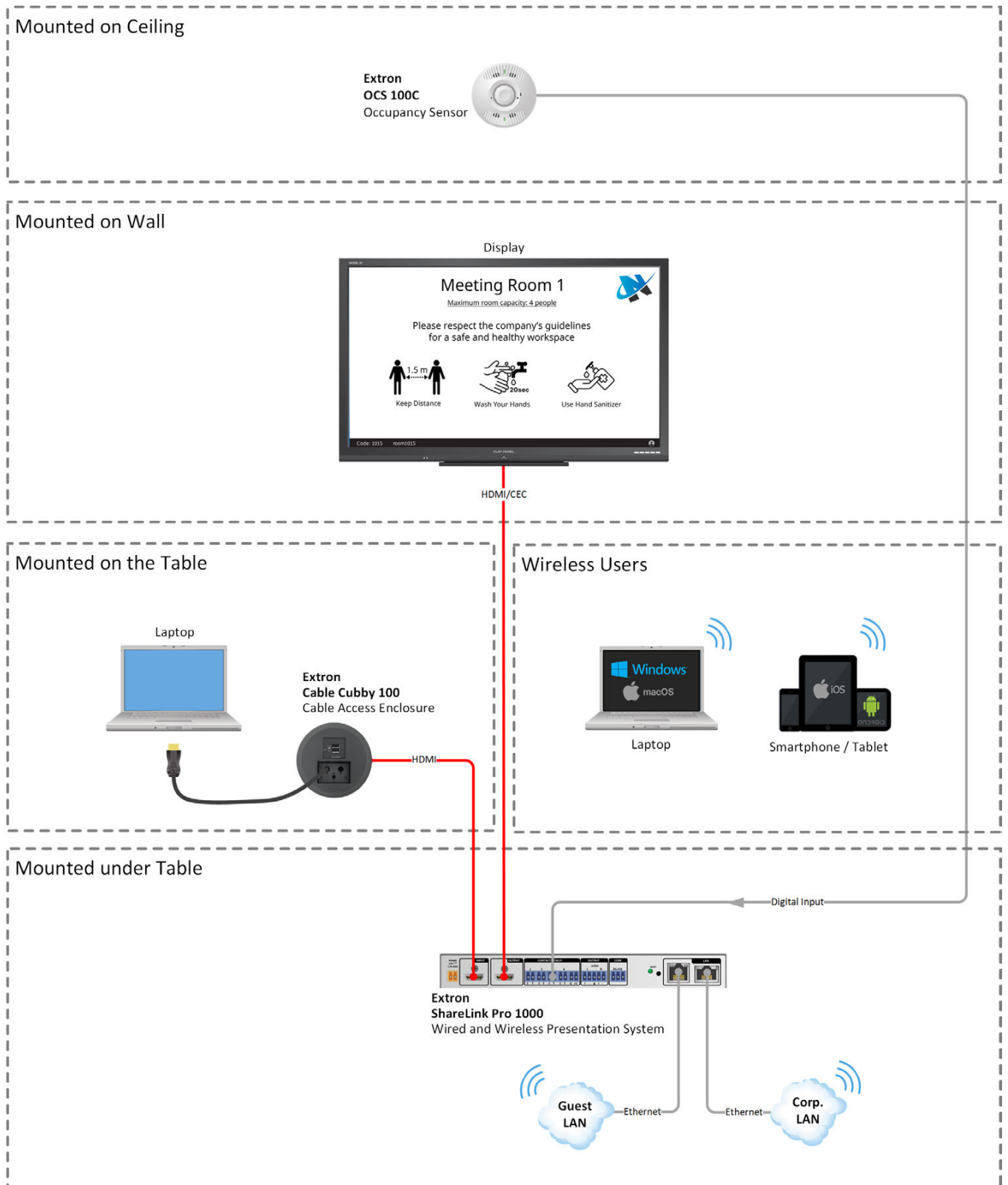
- **ShareLink Pro 1000** – Wired and Wireless Presentation System
- **Cable Cubby 100** – Cable Access Enclosure for AV Connectivity and Power
- **OCS 100C** – Occupancy Sensor

Capabilities

- Wirelessly share content from mobile devices
- Connectivity and cable management with Cable Cubby
- Automatic control of display power via presence detection



System Design



ROOM CONTROL FROM PERSONAL DEVICES USING QR CODES

Requirements

Room control is to be done from a personal device by scanning a QR code on the central touchpanel so people can use their own devices for control and minimize touching shared surfaces.

Enhanced audio quality is required by using a soundbar and display control and switching sources should be done automatically.

Extron Equipment List

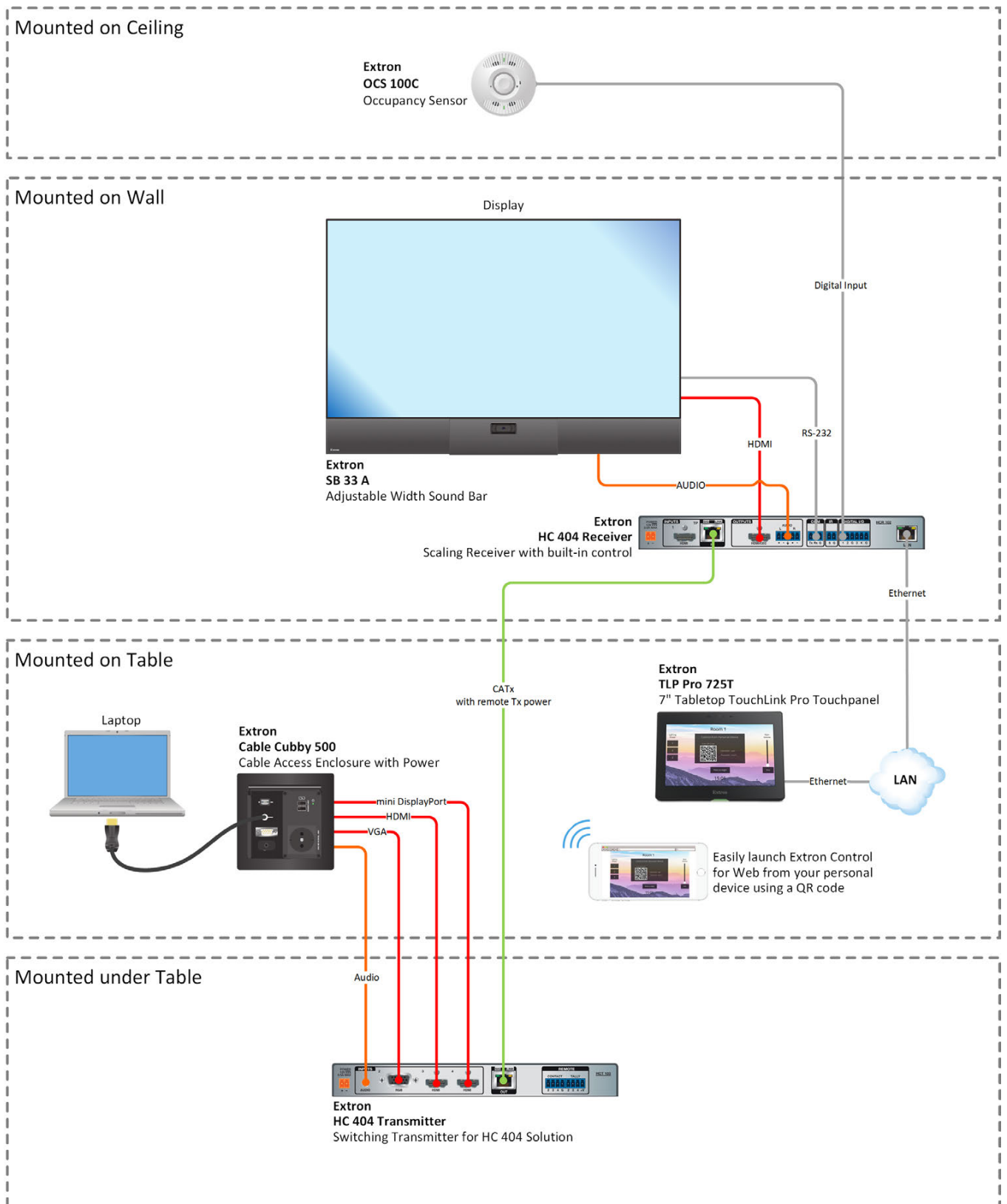
- **HC 404** – Meeting Space Collaboration System
- **SB 33 A** – Adjustable Width Sound Bar
- **Cable Cubby 500** – Cable Access Enclosure for AV Connectivity, Remote Control, and Power
- **TLP Pro 725T** – 7" Tabletop TouchLink Pro Touchpanel
- **OCS 100C** – Occupancy Sensor



Capabilities

- Easily launch Extron Control for Web from your personal device using a QR code
- Automated control of display and system power with presence detection
- Control for AV functions including power, switching inputs, and volume control
- Enhanced audio quality for collaboration spaces
- Connectivity and cable management with Cable Cubby
- Automatic switching of sources based on signal presence

System Design



— USB — Video — Audio — CATx — Control

AUTOMATIC CAMERA CONTROL WITH CEILING TILE MICROPHONE

Requirements

Software conferencing room with automatic camera and display control.

Camera control should be done automatically by using a ceiling microphone tile array with beamforming to locate the speaker and to control the camera based on the speaker position.



Extron Equipment List

- **MediaPort 200** – HDMI and Audio to USB Scaling Bridge
- **IPCP Pro 250** – IP Link Pro Control Processor
- **OCS 100C** – Occupancy Sensor
- **SB 33 A** – Adjustable Width Sound Bar
- **DMP 64 Plus C AT** – 6x4 ProDSP Digital Matrix Processor

Capabilities

- Automatic camera control with Sennheiser TeamConnect2 ceiling tile microphone
- Automatic display control
- Multi-platform software conferencing
- Enhanced audio quality for collaboration spaces
- Advanced acoustic echo cancellation
- Seamlessly integrates pro AV HDMI camera into a software codec application

Requirements

Room scheduling solution with a wayfinding interface that provides real-time meeting space availability, status, location information, and health and safety information using a centralized display.

Check meeting information from the standalone room scheduling panels that are placed outside of the meeting room to verify that you are at the right place before entering the room. Whether rooms are reserved ad-hoc or scheduled, occupancy sensors ensure that the room is available for others when needed.



Extron Equipment List

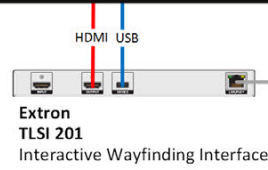
- **TLSI 201** – Interactive Wayfinding Interface
- **TLS 725M** – 7" Wall Mount TouchLink Scheduling Panel
- **OCS 100C** – Occupancy Sensor

Capabilities

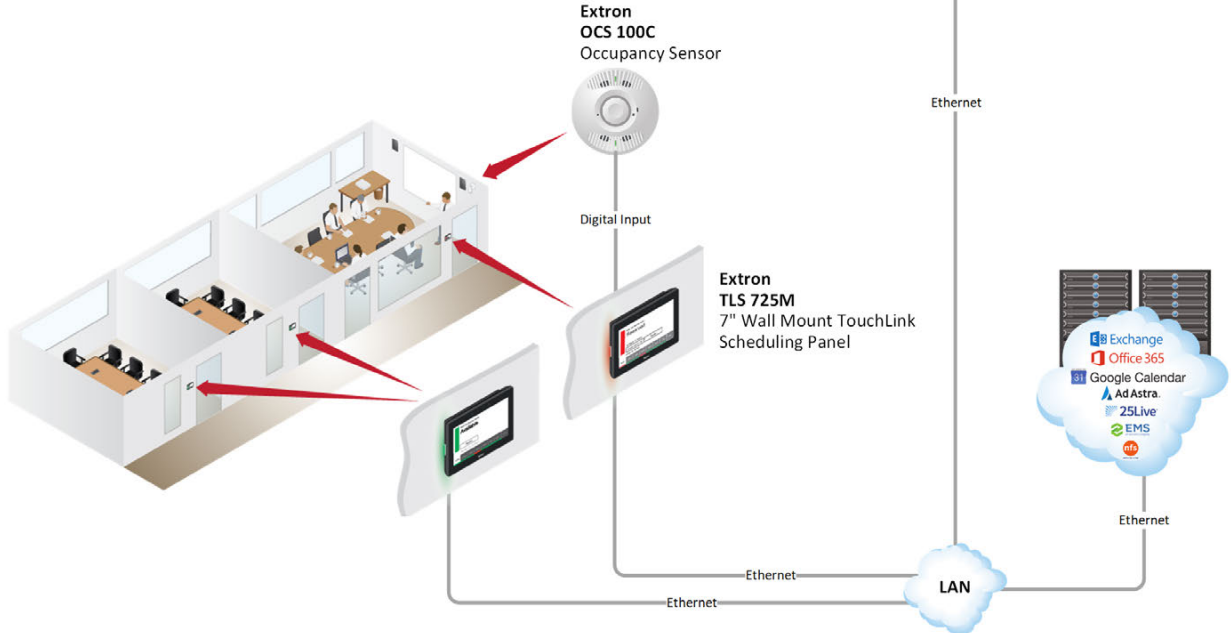
- Easily find and book a meeting space from a centralized location
- View the availability status of a meeting from the central lobby or even from down the hall
- Easily inform customers with health and safety instructions
- Communicate fixed walking routes
- Verify meeting information on the room scheduling panel before entering the room
- Automatically release inactive rooms back to available status
- Create powerful reports to closely analyze room usage and activity patterns

System Design

Central Lobby Area



Conference Rooms





WORLDWIDE SALES OFFICES

Anaheim • Raleigh • Silicon Valley • Dallas • New York • Washington, DC • Toronto • Mexico City • Paris
London • Frankfurt • Madrid • Stockholm • Amersfoort • Moscow • Dubai • Johannesburg • Tel Aviv • Sydney
Melbourne • Bangalore • Mumbai • New Delhi • Singapore • Seoul • Shanghai • Beijing • Hong Kong • Tokyo

www.extron.com