

4K LCD Monitor with 12G-SDI support 15.6" / 23.8" / 28"

UH1560S/UH2380S/UH2800S

- 4K Ultra HD LCD Panel
- Multi size selection (12.5" / 15.6" / 23.8" / 28")
- Multi format SDI (12G / 6G / 3G / HD-SDI) support
- 2 types of Quad 3G-SDI (2SI / SQD) support
- 4 HDMI Input (HDMI 2.0 x 1 / HDMI 1.4 x 3)
- Tally function (D-sub 9 pin)
- VESA 100x100 support
- 4H hard protective panel
- 4pin XLR power input support
- External battery support (V mount on back side)
- Carry box available (Optional)



Model No : UH1560S [15.6" Color: Black]
 UH2380S [23.7" Color: Black]
 UH2800S [28" Color: Black]



4K UHD



Introduction

UH1560S, UH2380S and UH2800S features a 15.6, 23.8 and 28 inch native 4K Ultra HD (3840x2160) resolution IPS panel with 12G / 6G / 3G-SDI support. 4K output is supported by single 12G and 6G-SDI as well as Quad 3G-SDI. 2SI and SQD are both supported for Quad 3G-SDI. This model also supports 1x HDMI 2.0 port for Ultra HD content at 60Hz as well as 3x HDMI 1.4 ports for Ultra HD content at 30hz. These models are HDCP compliant.

Compared to conventional HD LCD panels the 4K IPS LCD panel has a 4 times higher display resolution. The 4K UHD panel allows for playback of 4 Full HD contents in 4-way split screen mode. Vertical and horizontal 2-way split screen, PIP and Safety Marker functions to assist creators are also supported.

The included self-standing floor stand includes screw holes for additional stability at any location. These models also supports power input from XLR connector. Support for V-Mount battery plates is also included through mount holes on the back.

This 4K industrial LCD monitor adapts to a wide range of use including broadcasting, laboratory, medical, promotional and any other scene where 4K UHD is needed.

4K UHD IPS panel

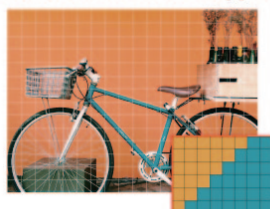
The 4K panel has high brightness (330cd/m2), wide viewing angle (176 deg/176 deg) and high contrast (1000:1)



4x higher resolution than Full HD due to 4K UHD support



Full HD (1920x1080)



4K UHD (3840x2160)

※ More pixels than Full HD.
Smooth and high detailed picture

4x HDMI ports

(1x HDMI 2.0/ 3x HDMI 1.4)

1x HDMI 2.0 port for 4K@60 and 3x HDMI 1.4 ports for 4K@30 with support for HDCP 1.4 for playback of protected contents like Blu-ray *1

Tally function (D-sub 9 pin)

A tally function that lights up red or green on the upper side of the monitor screen is provided to indicate which monitor image is being recorded (or being broadcast) when there are multiple images or shooting equipment.



4-pin XLR power input

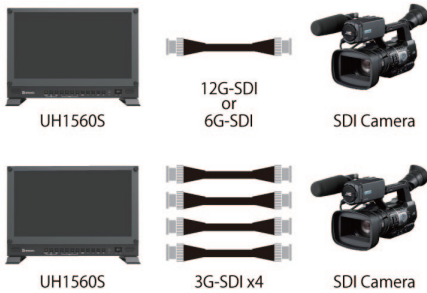
The power supply corresponds to the 4-pin XLR power input from the included AC adapter.

www.ad-techno.com/en

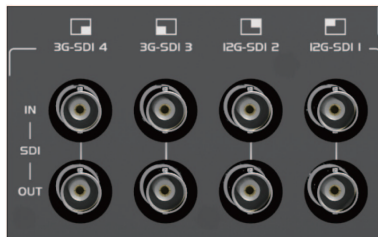
info@ad-techno.com

4K UHD IPS panel

Support for 12G/6G/3G/HD/SDI and 2SI/SQD Quad 3G-SDI
Supports 4K using single 12G or 6G-SDI as well as Quad 3G-SDI
2SI and SQD are supported for Quad 3G-SDI SDI OUT with pass through from SDI IN.



2SI / SQD Support



Equipped with VESA100x100mm / 200x200mm screw holes

Equipped with VESA100x100mm and 200x200mm screw holes on the back, it can be installed on a tripod or arm or mounted on a wall.

Specification

Model No.	UH1560S	UH2380S	UH2800S
Color	Black	Black	Black
Panel	15.6" 16:9 Wide format IPS Panel	23.8" 16:9 Wide IPS Panel	28" 16:9 Wide IPS Panel
Resolution	3840x2160	3840x2160	3840x2160
Response Time	25ms	20ms	8ms
Brightness	330 cd/m2	300 cd/m2	300 cd/m2
Contrast ratio	1000:1	1000:1	1000:1
View Angle	176° (H) / 176° (V)	178° (H) / 178° (V)	170° (H) / 160° (V)
Input	12G-SDI x 2 / 3G-SDI x 2 / HDMI 2.0 (HDCP1.4) x 1 / HDMI 1.4(HDCP1.4) x 3	12G-SDI x 2 / 3G-SDI x 2 / HDMI 2.0 (HDCP1.4) x 1 / HDMI 1.4(HDCP1.4) x 3	12G-SDI x 2 / 3G-SDI x 2 / HDMI 2.0 (HDCP1.4) x 1 / HDMI 1.4(HDCP1.4) x 3
Output	12G-SDI x 2 / 3G-SDI x 2 / 3.5mm Stereo headphone jac	12G-SDI x 2 / 3G-SDI x 2 / 3.5mm Stereo headphone jac	12G-SDI x 2 / 3G-SDI x 2 / 3.5mm Stereo headphone jac
Other I/O	mini D-sub 9 pin (for Tally)	mini D-sub 9 pin (for Tally)	mini D-sub 9 pin (for Tally)
Speaker	2W x 2 (L&R)	2W x 2 (L&R)	2W x 2 (L&R)
External battery	V-Mount plate mounting holes	V-Mount plate mounting holes	V-Mount plate mounting holes
Stand	Self-standing floor stand	Self-standing floor stand	Self-standing floor stand
Power	4 pin XLR	4 pin XLR	4 pin XLR
Power Consumption	Max. 34W	Max. 62W	Max. 62W
Operating Temperature	0 to 40 degrees	0 to 40 degrees	0 to 40 degrees
Storage Temperature	-20 to 60 degrees	-20 to 60 degrees	-20 to 60 degrees
Size	389(W) x 267(H) x 37.2(D) mm (not including stand)	579(W) x 376.4(H) x 68(D) mm (not including stand)	670(W) x 425(H) x 72(D) mm (not including stand)
Weight	approx. 3350g (not including stand)	approx. 8700g (not including stand)	approx. 10700g (not including stand)
Certifications	FCC / CE / PSE / RoHS	FCC / CE / PSE / RoHS	FCC / CE / PSE / RoHS
Accessories	AC adaptor / Manual	AC adaptor / Manual	AC adaptor / Manual

*1 HDCP 2.2 is not supported ※4Pin XLR cable is not included ※Running time is approx. 3.2hr using ITX V mount type lithium ion battery DUO-C95 (theoretical value) ※HDMI, HDMI logo, or High-Definition Multimedia Interface are trademarks or registered trademarks of HDMI Licensing LLC. ※Due to product improvements, specifications are subject to change without notice. ※Compatibility with ALL devices not guaranteed.

Support for external batteries (mounting holes for V-Mount brackets)

LMounting holes for V-Mount battery plates on the back side to allow usage outdoors

4H acrylic panel for LCD protectionbrackets (SH1560S)

In addition to a robust metal housing design, the main unit is equipped with an acrylic panel for LCD protection with a hardness of 4H (thickness 3mm) as standard. In addition, the standard stand of the LCD monitor is equipped with a fixing screw hole in a stable upright fixed type self-supporting stand, and boasts excellent stability even on site use.

Dedicated carry box (optional)

A dedicated carry box is available as an option for each product. The aluminum carry box is lightweight and sturdy, protecting the product from damage in hard locations. In addition, the carry box opens and closes with the monitor mounted on the front and back, allowing you to quickly connect and display cables without removing them from the carry box. In the field where speed is always required, the time can be used more effectively by making the equipment setting more efficient.



The latest information and the detailed product specifications are available at www.ad-techno.com/en/

Copyright (c) ADTECHNO Inc. All rights reserved. "ADTECHNO" and the ADTECHNO logo are registered trademarks of ADTECHNO Inc. All other brand names and trademarks or registered trademarks are the property of their respective owners. Pricing, specifications and availability subject to change without notice. Actual products, product images, and online product images may vary from images shown here. Not responsible for typographical errors.



3F., 3-29, Ichigayahonmuracho, Shinjyuku-Ku, Tokyo 162-0845 Japan
TEL: +81 3 5206 3330 FAX: +81 3 5206 3339

Osaka Branch
7F., Fukusima Bldg., 5-13-18 Fukushima, Fukushima-Ku, Osaka 553-0003, Japan
TEL: +81 6 6451 0050

Taiwan Branch / Factory
3/4F., No.268, Liancheng Rd., Zhonghe Dist., New Taipei City 23553, Taiwan
TEL: +886 8227 9136 FAX: +886 2 8227 9186