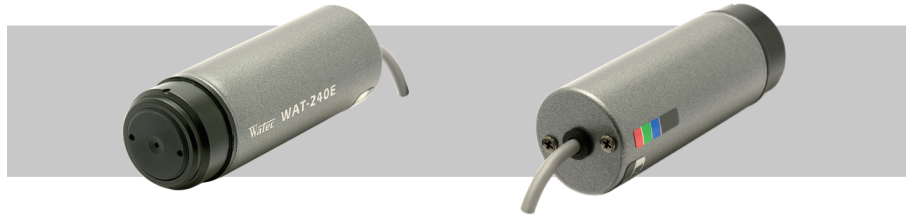


WAT-240E (P3.7) 1/4" Miniature Camera

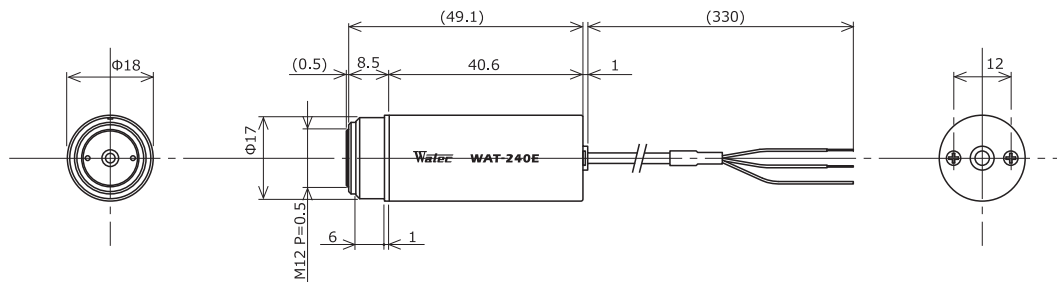
Compact cylindrical camera with Built-in lens



Key features

- Resolution of 480TVL
 - Versatile use for limited space, general surveillance, embedded system and part of image processing system
- ※Glass lenses and pinhole lenses are not interchangeable

Dimensions



Specifications

		NTSC	PAL
Video standard		NTSC	PAL
Pick-up element		1/4 inch CMOS image sensor	
Number of effective pixels		648(H) × 488(V)	
Unit cell size		5.6μm(H) × 5.6μm(V)	
Imaging system		RGB primary color bayer arrangement mosaic filters on chip	
Synchronizing system		Internal	
Scanning system		Progressive	
Video output		Composite: 1.0 V(p-p) 75Ω (Unbalanced)	
Resolution (H)		More than 480TVL (Center)	
Minimum illumination		0.3 lx F2.0 (AGC ON=42dB, Shutter=OFF)	
S/N		More than 52dB (AGC OFF=0dB, γ=1.0)	
Function settings		-	
AE mode	Fixed	-	
	EI	1/60 - 1/100000 sec.	1/50 - 1/100000 sec.
White balance		ATW	
AGC	ON	0 - 42dB	
	OFF	-	
MGC		-	
Day/Night		-	
Gamma characteristics		γ≈0.45	
Video level		85IRE	
Noise reduction		-	
Wide dynamic range		-	
Lens iris		-	
Back light compensation		BLC	
White blemish correction		-	
Sharpness		-	
Defog		-	
Digital zoom		-	
Privacy mask		-	
Mirror image		-	
Freeze		-	
Motion detection		-	
Neg.image		-	
Interface		3P cable (Composite Video, Power in)	
Power supply		DC+5V - 6V	
Power consumption		0.66W/110mA (DC+6V)	
Operating temperature		-10 - +50°C	
Storage temperature		-30 - +70°C	
Operating / Storage humidity		95% RH or less (Without condensation)	
Lens mount		M12 P=0.5	
Standard lens		3720B-12P(B) (f3.7 F2.0)	
Cable length		330mm	
Weight		Approx. 18g	
Accessories		Ring holder	

Accessories Options

