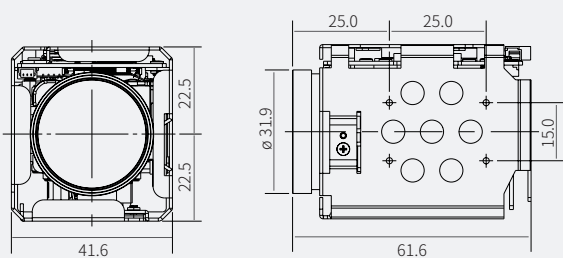


Zoom Camera

ATC-HZ7810C-L

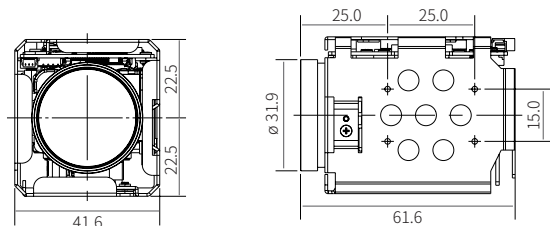
- 1/2.8" Progressive Scan CMOS
- 120x AF Zoom(10x optical zoom, 12x digital zoom)
- 1080p 60(50fps)
- Mechanical Day&Night
- True WDR
- 3D DNR, Defog
- UART RS232-TTL(Pleco-D, Pelco C, VISCA, Hitachi)



Zoom Camera

ATC-HZ7810C-L

Dimensions



Specifications

Image Sensor	1/2.8" Progressive Scan CMOS	
Effective Pixels	2.13MP 1945(H) x 1097(V)	
Video Output mode	Main: LVDS , Sub: HD-SDI/EX-SDI(1.0)/CVBS	
Max. Video Resolution	1080p@60(50fps)	
Synchronization system	Internal	
Min.Illumination	Day mode : 0.5Lux(F1.6) Night mode : 0.1Lux(F1.6/ IR-cut filter on)	
S/N Rate	More than 52dB(AGC off, DSS off)	
Lens	Type	AF Optical zoom lens(DC Iris), IR Corrective
	Focal Length	f=5.1mm~51mm
	F-value	F1.6(W)~1.8(T)
	Angle of View	Horizontal 54.0°(W)~4.9°(T), Vertical 31.0°(W)~4.0(T)°
Zoom ratio	Optical 10x / Digital 12x	
Focus Min.Working Distance	0.01m(Wide)/1.0m(Tele)~∞	
Focus Control	Auto/Manual/Interval/One push/One shot Limit	
AE mode	Auto/Shutter Priority/Iris Priority/Manual/Bright	
Brightness	0~14	
Manual Shutter	x32~x2(Low shutter), 1/30(25), 1/60(50)~1/30000	
Manual Iris	F1.5~F19, Close	
Sense-up	Off~32fields	
ETC	Spot AE, Slow AE	
D&N Mode	Auto/Day(Color)/Night(BW)/External-H or L	
White Balance	AUTO/ATW/Indoor/Outdoor/Push/Manual	
Image Freeze	Off/On	
Image Flip	Off/Horizontal/Vertical/H+V(180° Flip)	
Privacy Mask Zone	16 Zones/14 mask color selectable, semi-transparency	
Digital Image Stabilization	Yes	
Motion Detection	4 Zones	

D-WDR	Off/Low/Middle/High	
WDR	Off/Low/Middle/High	
BLC	Off/On, Area selectable	
HLC	Off/0~20, Color selectable	
AGC	Max.58dB	
Sharpness	Adjustable(0~10)	
3D-DNR	On/Off/Auto	
2D-DNR	Off/On	
Defog	Off/Low/Middle/High	
Preset Position	256 positions	
Language	English, Janpanese, Russian, Spanish, German, France, Portuguese, Chinese	
UART	Remote	RS232 TTL +5.0V(+3.3V compatible)
	Protocol	VISCA/Pelco-D/Pelco-P(Automatic detection)
	Baud rate	2400/4800/9600/19200/38400/57600/115200bps
UTC	-	
Supply Voltage	12VDC(7V to 15VDC)	
Power Consumption	Max.5.2W / Non-working zoom&focus 3.2W	
Dimension(mm)	41.6X45X61.6mm	
Weight	Approx.124g	
Operating Temperature	-10°C~+50°C, Humidity(20~80%)	
Storage Temperature	-20°C~+60°C, Humidity(20~95%)	
Support Video Output	-	